

Isabela Ledo (*Municipality of Niterói*)

Juliana DeCastro (*PLANETT*)

Luiz Saldanha (*PLANETT*)



Source: NELTUR

# Governance helps boost cycling mobility in Niterói

Authors:



PREFEITURA  
DE NITERÓI

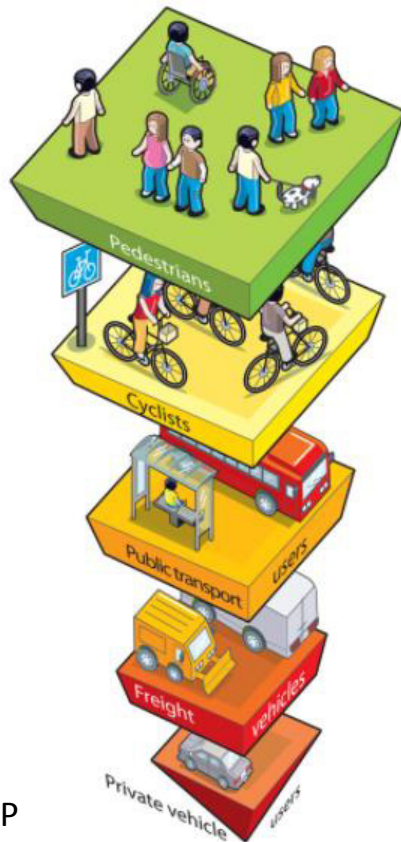


Thanks to:



# Brazilian National Policy of Urban Mobility

Federal Law 12.587/12



Source: ITDP

## Bike-related guidelines

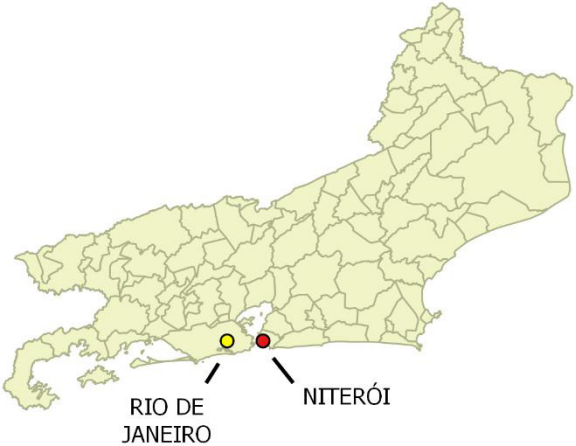
- Priority to active transportation & to public transport systems.
- Attenuation of environmental, social and economic impacts of people and cargo movement within the city.

# Why cycling can be a tool for :

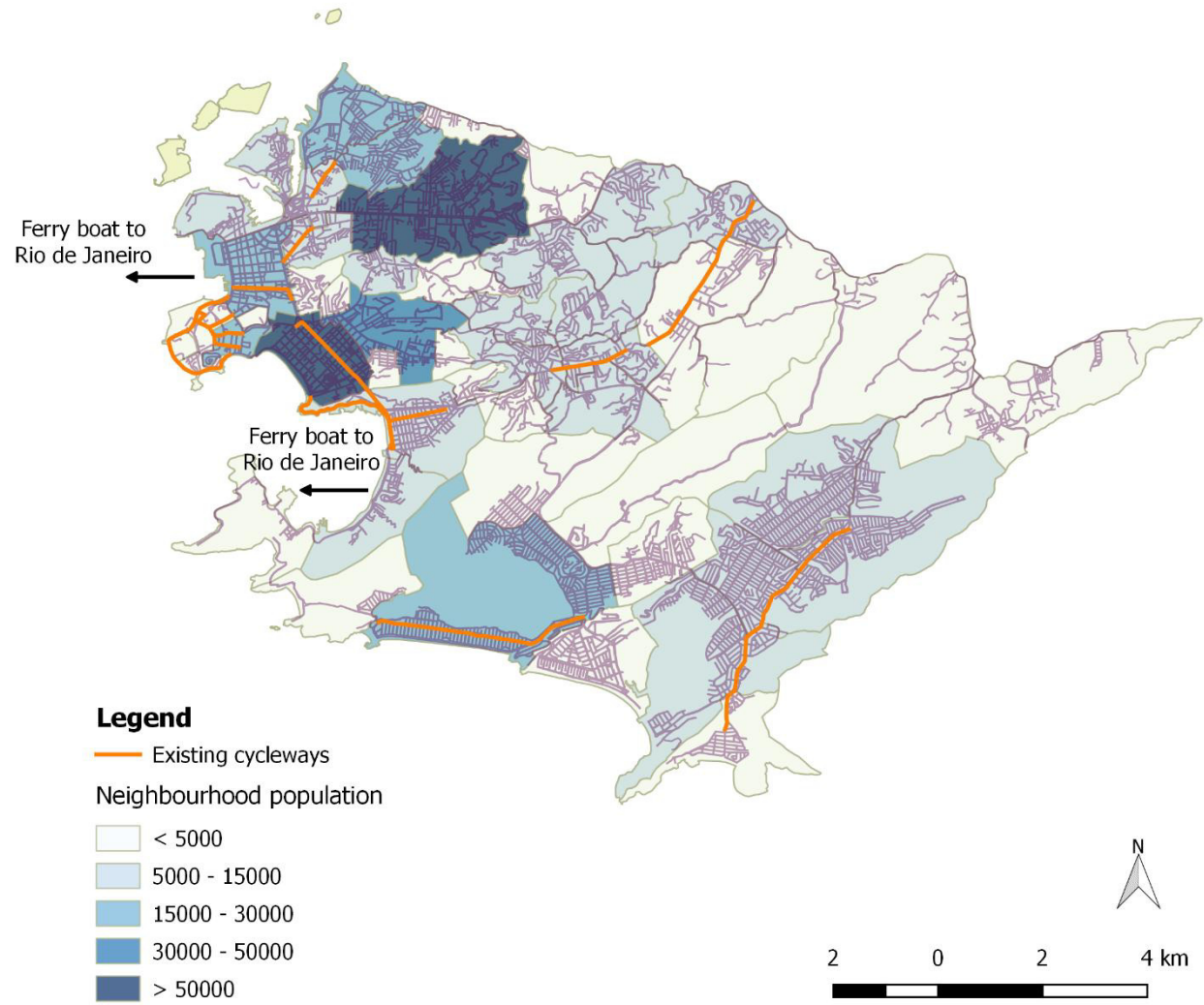
Strengthening the city's identity  
Supporting sustainable urban mobility  
Promoting sustainable tourism



# CITY OF NITERÓI



## STATE OF RIO DE JANEIRO









Historical Heritage



World-class Modern Architecture

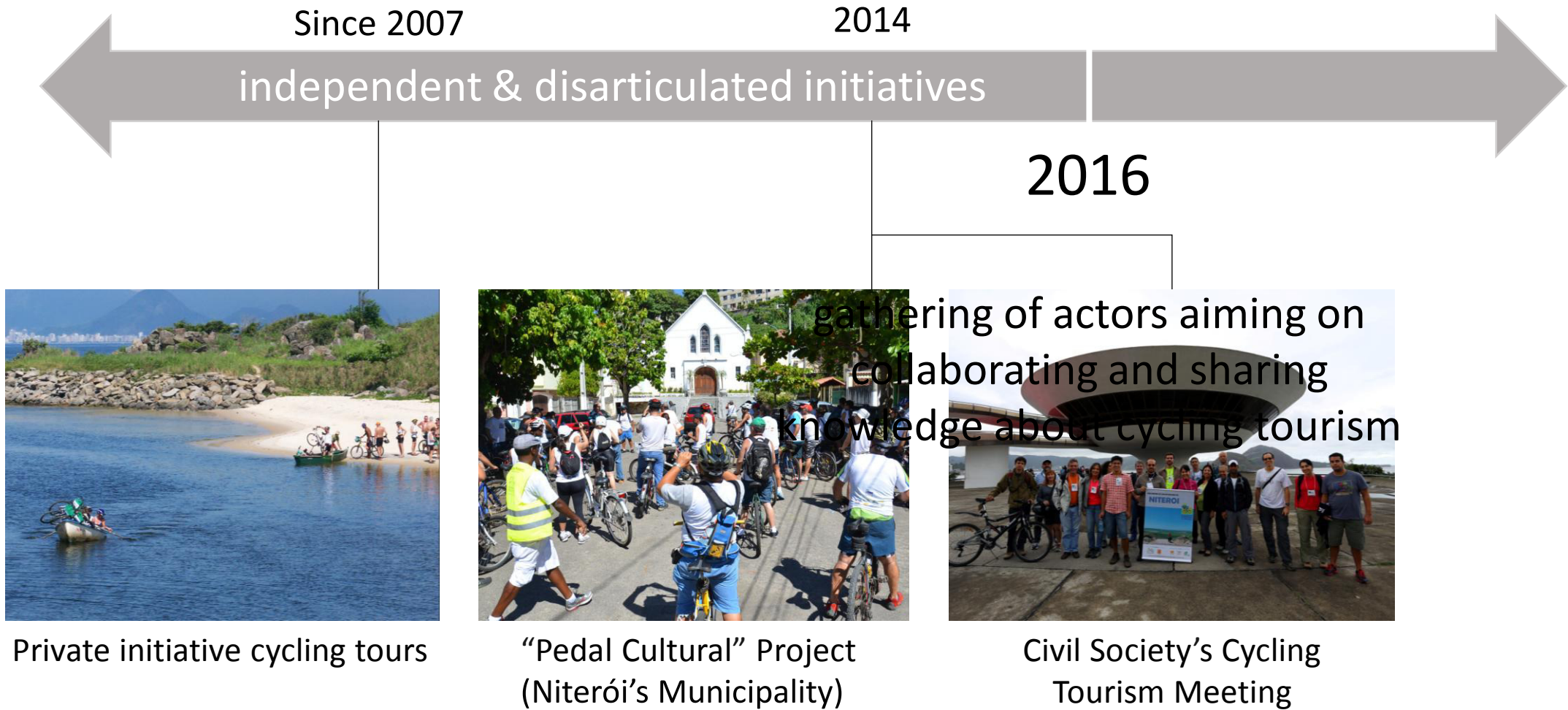


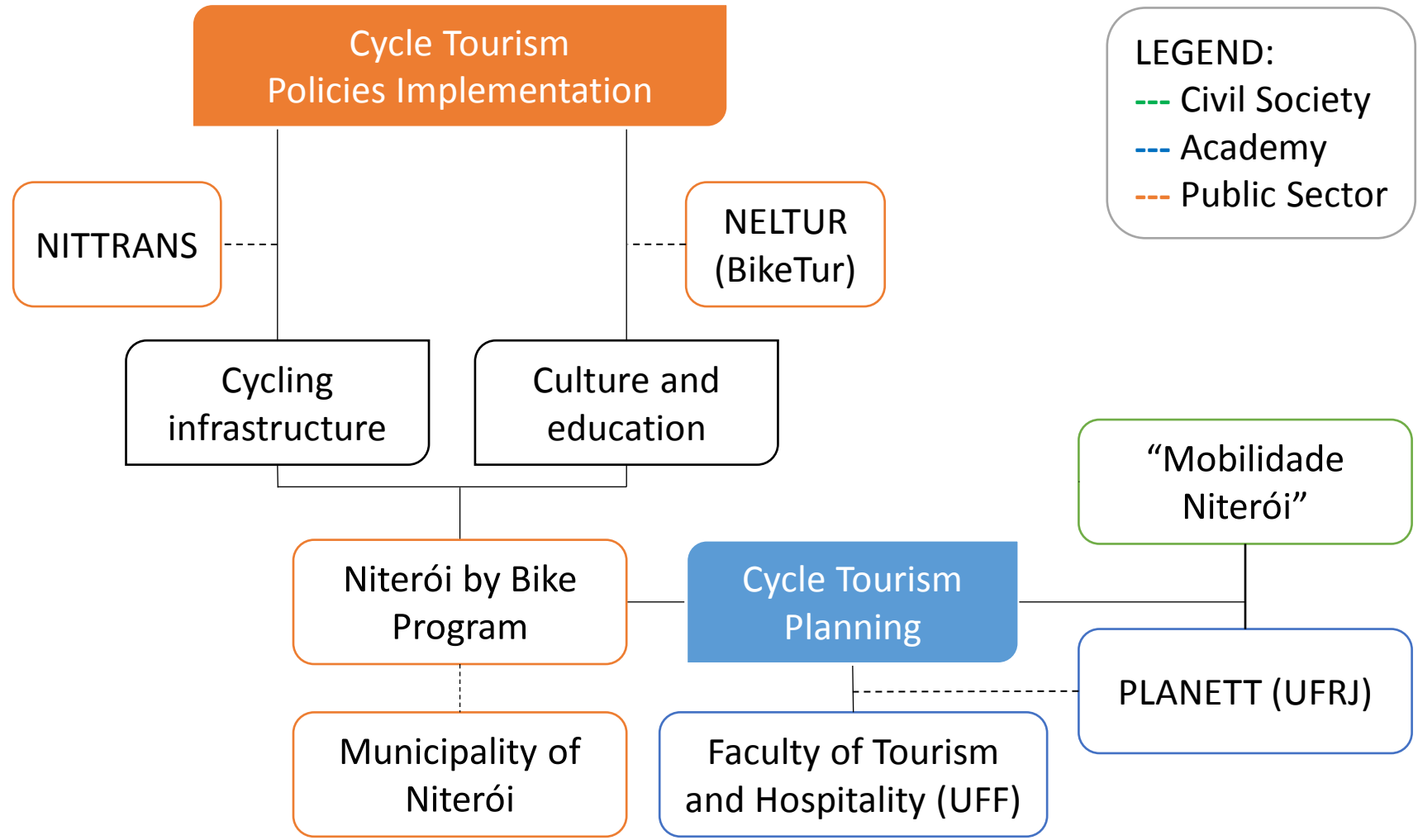
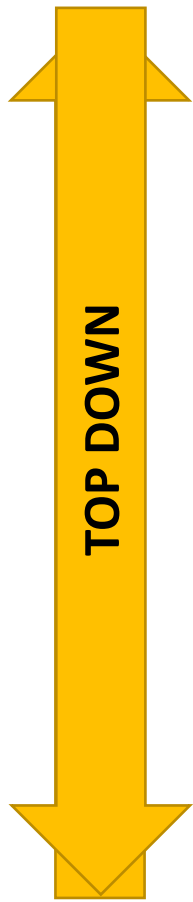
Natural Assets

Source: NELTUR



# Cycling Tourism in Niterói



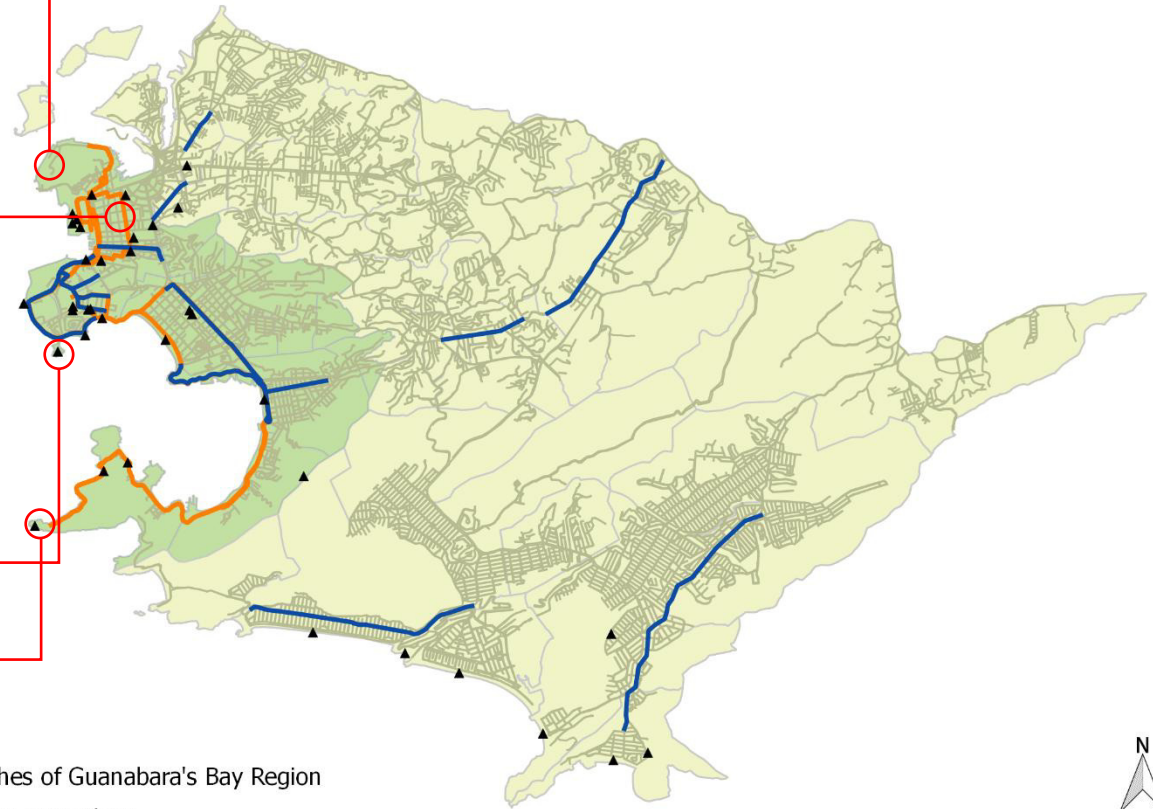




# About the project



Source: NELTUR  
Mobilidade Niterói



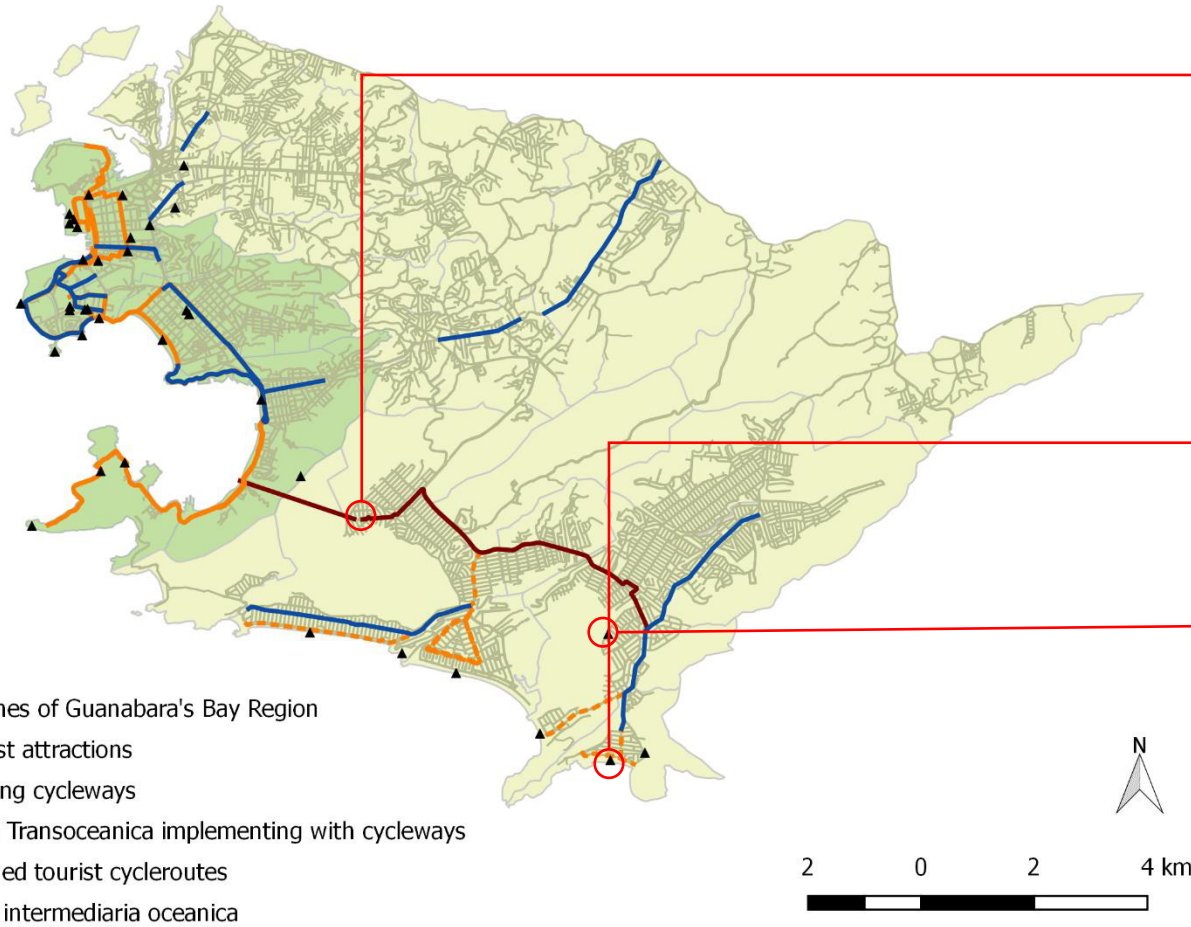
## Legend

- Beaches of Guanabara's Bay Region
- ▲ Tourist attractions
- Existing cycleways
- Planned tourist cycleroutes





# About the project



Source: NELTUR



# 1st Meeting for the Development of Cycling Tourism



**CICLO  
TURISMO  
URBANO**

I ENCONTRO PARA O DESENVOLVIMENTO  
DO CICLOTURISMO

26 e 27 DE OUTUBRO 2016 | NITERÓI



## LECTURE SESSIONS



Key speakers:



Round tables:

- Public Sector
- South American private initiative
- Organized civil society

## ACADEMIC SESSION



- National coverage
- 11 published papers

## AUDIOVISUAL SESSION

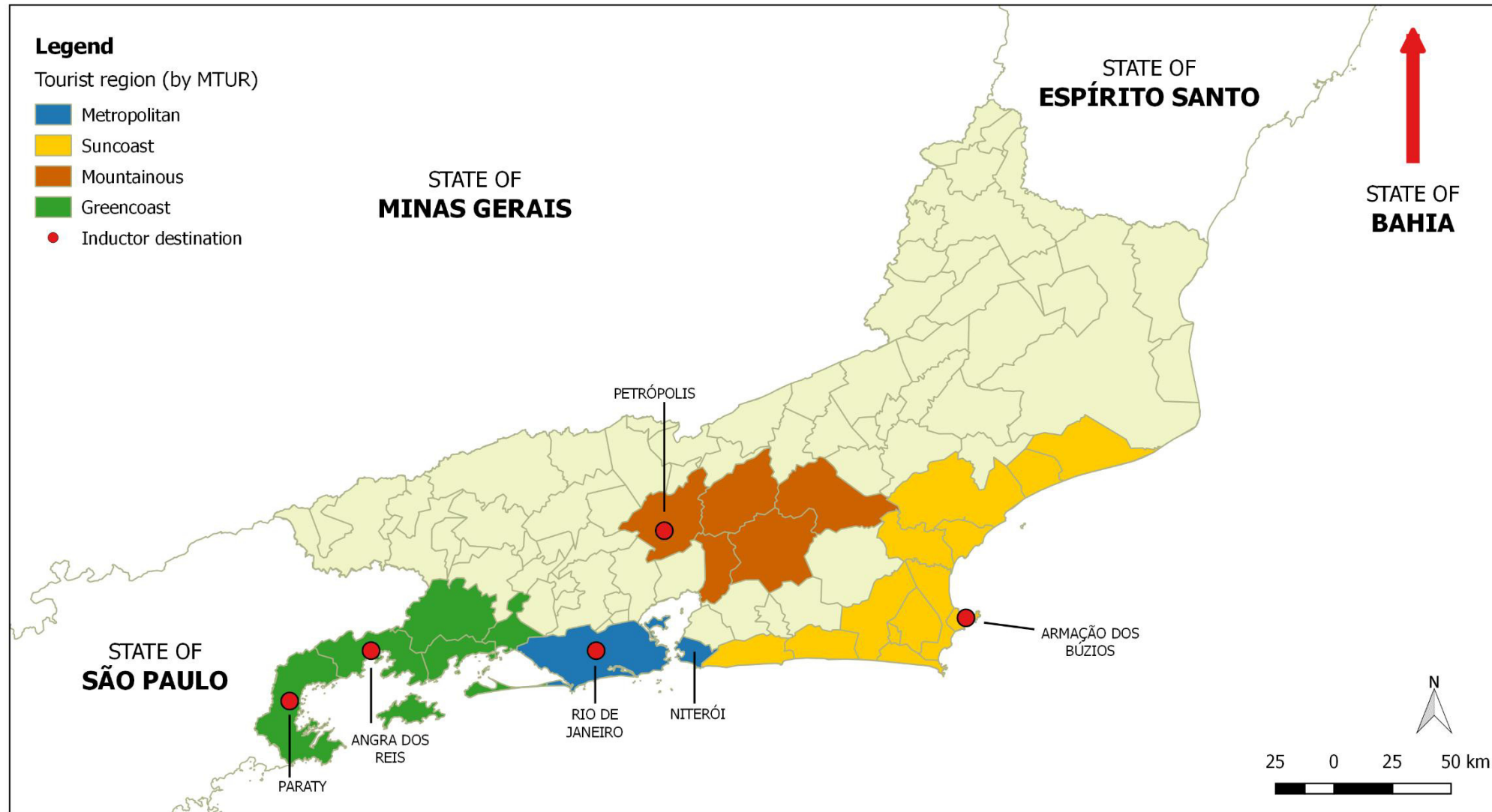


## CYCLING CITY TOUR





# Perspectives: Niteroi as cycling hub



# THANK YOU!

Luiz Saldanha - PLANETT

luizsaldanha@pet.coppe.ufrj.br

Isabela Ledo – Municipality of Niterói

isabelaledo.niteroi@gmail.com

Juliana DeCastro - PLANETT

jdecastro@pet.coppe.ufrj.br

**SPECIAL THANKS:**

